

The Inquiry Centre

Animals

Years P - 2

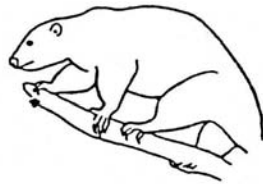
The Inquiry Centre in the Queensland Museum is where people can ask about things they have seen or collected to find out more about them.

Marsupials

Draw my tail

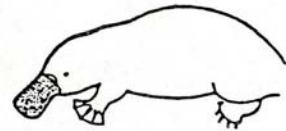


Bilby



Herbert River Ringtail Possum

Monotremes



Platypus

Invertebrates

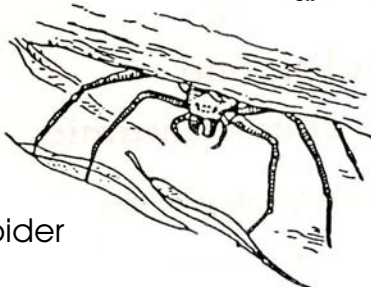
How many legs do I have? Circle the correct number

stick insect



- ⋮ 6
- ⋮ 8
- ⋮ 10

spider



- ⋮ 6
- ⋮ 8
- ⋮ 10

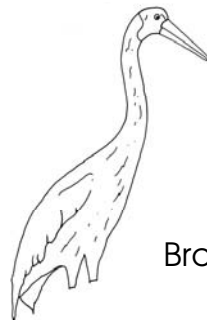
crab



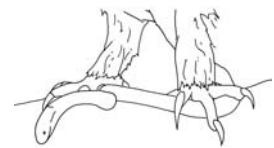
- ⋮ 6
- ⋮ 8
- ⋮ 10

Birds

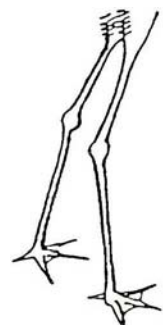
Draw a line joining my legs to my body.



Brolga



Southern Giant Petrel



Little Eagle

Cultural Heritage

Have a look at all the different types of things that this Museum collects to tell stories about who we are.

Classical Antiquities



The goddess, Bast, is shown as
(Tick the correct answer)

- A dog
- A cat
- An owl

Queensland Ceramics

What is inside the fat cook?
(Tick the correct answer)

- sugar
- rice

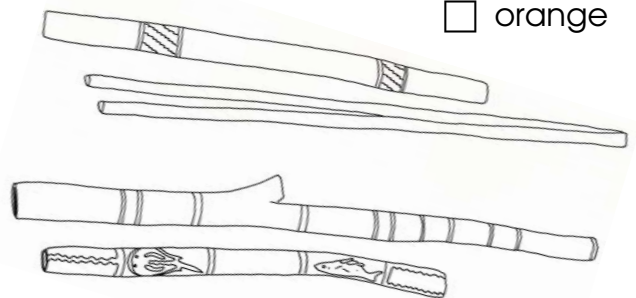


Aboriginal Artefacts

What colours are these didgeridoos?
(Tick the correct answers)

(Tick the correct answers)

- black
- blue
- red
- yellow
- orange

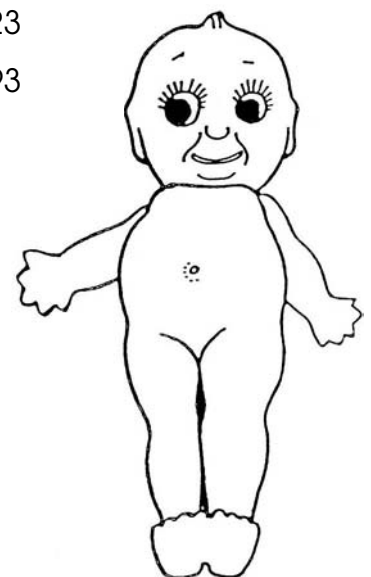


Domestic and Personal Artefacts

When was the Kewpie Doll made?
(Tick the correct answer)

(Tick the correct answer)

- 1923
- 1823
- 1993



English and European Ceramics

Draw the lovely blue lady's candle